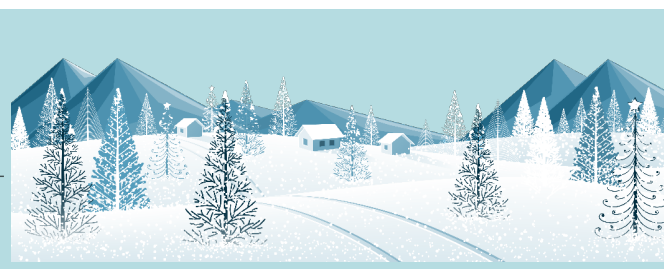


2024

CALENDAR YEAR

JANUARY

CALENDAR MONTH



The WOODLANDS

Fairport Baptist Homes

Sunday	Monday	Tuesday	Wednesday	Thursday	Friday	Saturday
<p>31</p>	<p>01</p>	<p>10 AM 02 Puzzle Social Lounge</p> <p>2 PM Euchre 2nd Floor Game Room</p> <p>SOFI Closed</p>	<p>10 AM 03 Social Hour in the Lobby</p> <p>2 PM Scrabble 2nd Floor Game Room</p>	<p>2 PM 04 Wii Bowling Lounge</p>	<p>9 AM 05 Group Fitness Dining Room</p> <p>2 PM Euchre 2nd Floor Game Room</p>	<p>2 PM 06 Rummikub 2nd Floor Game Room</p>
<p>07</p> <p>2 PM Games 2nd Floor Game Room</p>	<p>11 AM 08 Group Fitness Dining Room</p> <p>1:30 PM Catholic Communion Lounge</p> <p>Walmart-- To register contact SOFI (585) 377- 8117</p>	<p>10 AM 09 Puzzle Social Lounge</p> <p>2 PM New Years Resolutions Social with Konrad Lounge</p>	<p>10 AM 10 Social Hour in the Lobby</p> <p>2 PM Scrabble 2nd Floor Game Room</p>	<p>10 AM 11 Blood Pressure Checks with Lisa Knight Lobby/Lounge</p> <p>2 PM Wii Bowling Lounge</p> <p>Cheesecake Factory-- To register contact SOFI (585) 377- 8117</p>	<p>9 AM 12 Group Fitness Dining Room</p> <p>2 PM Euchre 2nd Floor Game Room</p>	<p>2 PM 13 Rummikub 2nd Floor Game Room</p>
<p>14</p> <p>2 PM Games 2nd Floor Game Room</p>	<p>11 AM 15 Group Fitness Dining Room</p> <p>1:30 PM Po-ke-no (Bingo) with Pat Pilgrim Dining Room</p>	<p>10 AM 16 Puzzle Social Lounge</p> <p>2 PM Coloring with Konrad 2nd Floor Game Room</p> <p>Eastview Mall-- To register contact SOFI (585) 377- 8117</p>	<p>10 AM 17 Social Hour in the Lobby</p> <p>1 PM Travelogue: Cuba Lounge</p> <p>3 PM Joe Miltch Performance at the Bar</p>	<p>2 PM 18 Wii Bowling Lounge</p> <p>Trader Joe's-- To register contact SOFI (585) 377- 8117</p>	<p>9 AM 19 Group Fitness Dining Room</p> <p>2 PM Movie Screening Lounge</p>	<p>2 PM 20 Rummikub 2nd Floor Game Room</p>

Sunday	Monday	Tuesday	Wednesday	Thursday	Friday	Saturday	
<p>2 PM ²¹</p> <p>Games 2nd Floor Game Room</p>	<p>11 AM ²²</p> <p>Group Fitness Dining Room</p> <p>2 PM</p> <p>Uno 2nd Floor Game Room</p> <p>Walmart-- To register contact SOFI (585) 377- 8117</p>	<p>10 AM ²³</p> <p>Puzzle Social Lounge</p> <p>2 PM</p> <p>Euchre 2nd Floor Game Room</p>	<p>10 AM ²⁴</p> <p>Social Hour in the Lobby</p> <p>2 PM</p> <p>Scrabble 2nd Floor Game Room</p>	<p>10 AM ²⁵</p> <p>Blood Pressure Checks with Lisa Knight Lobby/Lounge</p> <p>2 PM</p> <p>Wii Bowling Lounge</p> <p>Landmark Resturant-- To register contact SOFI (585) 377- 8117</p>	<p>9 AM ²⁶</p> <p>Bagel/ Donut Social Lounge</p> <p>2 PM</p> <p>Unidine Meeting Dining Room</p>	<p>2 PM ²⁷</p> <p>Rummikub 2nd Floor Game Room</p>	
<p>2 PM ²⁸</p> <p>Games 2nd Floor Game Room</p>	<p>11 AM ²⁹</p> <p>Group Fitness Dining Room</p> <p>1:30 PM</p> <p>Trivia with Pat Pilgrim Lounge</p> <p>Tops Market-- To register contact SOFI (585) 377- 8117</p>	<p>10 AM ³⁰</p> <p>Puzzle Social Lounge</p> <p>2 PM</p> <p>Euchre 2nd Floor Game Room</p> <p>Walmart-- To register contact SOFI (585) 377- 8117</p>	<p>10 AM ³¹</p> <p>Social Hour in the Lobby</p> <p>2 PM</p> <p>Scrabble 2nd Floor Game Room</p>	<p>ELDERBUS: CALL (585) 377-8117 - 2 DAYS IN ADVANCE MONDAYS AND WEDNESDAYS: Wegmans/ Target (Penfield) TUESDAYS AND FRIDAYS: Wegmans (Perinton) THURSDAYS: Country Club Plaza and Aldi's</p> <p>VOLUNTEER DRIVERS: Call (585) 377-8117 - 2 weeks in advance for: Medical appointments within Monroe County only</p> <p>Please sign up for ALL activities in the GREEN binder at the front desk!</p>			

